

DID YOU KNOW?



In 2022, the Québec government will prohibit the burying of organic matter. Municipalities must establish the necessary facilities to comply with the requirements.

By participating to the organic matter collection, you will be able to take out the trash less frequently.

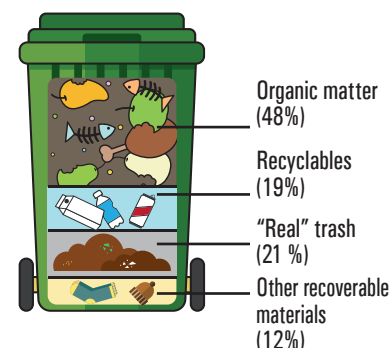
You can watch several video clips to learn more about composting by visiting the RITMRG website at ritmrg.ca!



In Québec, more than 360 municipalities offer organic matter collection to their citizens.

Organic matter decomposition in an engineered landfill generate leachate and methane (CH₄), a gas with a warming potential 25 times greater than carbonic gas (CO₂).

Half of what we throw away in our garbage bin is compostable!



The Rocher-Percé RCM, our neighbor, proceeded to the collection of the brown bin since 2012, and it works very well. They can divert more than 2,000 tons of materials from the engineered landfill every year!



YOU HAVE A QUESTION? WE HAVE AN ANSWER!

Q What is the purpose of the brown bin if I am already composting at home?

A Keep on your domestic compost! The brown bin will be used to receive the materials you cannot put in your composter, such as dairy products, meats, marine waste, tissues and your grass and dead leaves surplus.

Q Can I put my organic materials in a plastic bag?

A NO! You should not use any plastic bags, not even those qualified as «compostable», since they do not degrade fast enough. Moreover, the use of bags favors odors. You can use paper bags or journal paper to hold your materials.

Q Will there be odors and maggots?

A Not more than in the garbage bin! Moreover, the tips suggested in this leaflet and your collection calendar will help you reduce and prevent them.

Q What does happen during winter?

A Keep adding things to your brown bin and participate to the collection during winter. The truck will do fewer rounds but the cold will prevent the irritants such as odors. Follow the «antifreeze» tip to avoid the materials to stick at the bottom of the bin.

Q Is it not more polluting to transport our organic materials to Chandler?

A NO! The transport is optimized by a Multibox system: the trucks that transport waste from the Rocher-Percé RCM to the Gaspé engineered landfill will go back to Chandler with the organic materials of Gaspé instead of traveling empty.

Q Am I concerned by the brown bin?

A We are all concerned by the organic material collection! For homes, but also for all the industries, businesses and institutions of the Town of Gaspé.

You Have a Question? We Have an Answer!



Ville de Gaspé

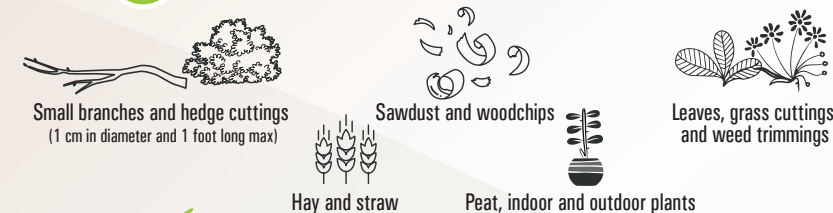
ITEMS ACCEPTED in brown bins



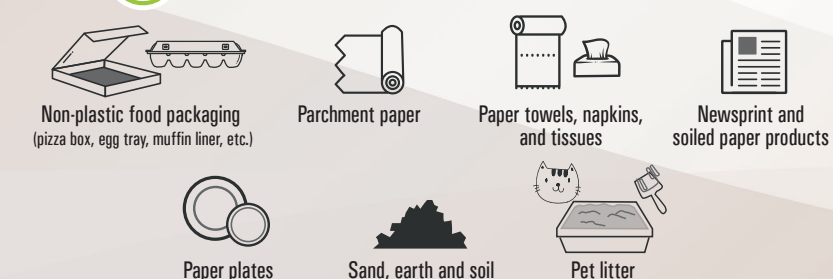
Food waste or scraps



Yard waste



Other acceptable items



ITEMS NOT ACCEPTED



GLASS

PLASTIC

METAL



Imprimerie du Havre

For any questions, call us at (418) 368-2104, ext. 8509, or visit ville.gaspe.qc.ca, section Management of Residual Materials.



Ville de Gaspé

To your bins,
SET,
COMPOST!



BENEFITS OF COMPOSTING

1 It is less expensive!

To process 1 ton:

\$85 \$85 \$145



No rate increase related to residual materials!

2 It is economical in the long term!

Reduce landfilling

Increase the engineered landfill's lifetime

Postpone the investment of a new engineered landfill

3 It is ecological!



Currently, 48% of what is found at the engineered landfill can be composted and 19% recycled.

4 It is a local product!

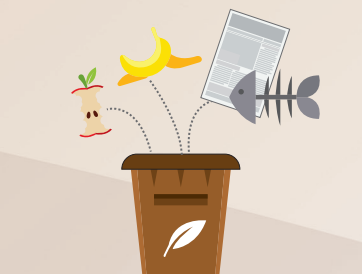
Your organic residues are transformed into a nutrient-rich compost



HOW DOES COMPOST WORK?

AT HOME

Steps



1 Put your residual matter in your counter bin



2 Transfer everything into your rolling bin



3 Put your bin out for each collection, even if it is not full!

Tips and Tricks

- Put journal paper at the bottom of the counter bin.
- **The Papillote:** Wrap the marine residues and meat in journal paper.
- Do not put any liquids!
- Do it gradually, starting with vegetable peelings, fruits and green waste. You will then be able to add meat, fish and other materials.

- Place the brown bin in the shade to slow the decomposition down.
- **The Lasagna:** Alternate the layers of leftovers (humid) with green waste and paper or cardboard (dry) during summer

- **Antifreeze Tip:** To avoid materials sticking to the bin during winter, insert a big bag of garden residues in the bin and place it above a thick layer (more than 3 inches) of dead leaves, paper or cardboard.

- In the presence of odors or insects, sprinkle the content of the bin with baking soda, water and vinegar, dead leaves or woodchips.



AT THE COMPOSTING SITE

Steps

1 Unloading and Manual Pre-Sorting

- The organic material is unloaded onto the composting platform.
- An employee proceeds to a manual pre-sorting to remove the contaminants (materials non-accepted into the brown bin).



2 Crushing and Addition of Woodchips

- The materials are crushed, and woodchips are added for carbon input.



3 Mixing

- We mix to integrate oxygen and foster the work of microorganisms (bacteria, mushrooms, etc.)



4 Maturation

- The temperature reaches up to 75° C, which makes it a mature, stable compost, meeting the quality requirements of the Ministry.



5 Sifting

- Once mature, the compost is sifted to remove the impurities. It is also analyzed in an accredited laboratory.



6 Finished Compost Sale

- Compost is sold in bags or bulk



MY TOOLBOX

- ✓ Counter bin (7 L)
- ✓ Rolling bin (240 L)
- ✓ Information Sheet
- ✓ Magnet with the list of compostable/non-compostable materials

NEW BIN, NEW SCHEDULE

Please refer to your 2018 Collection Calendar

Compost (brown bin):

- Summer: each week
- Autumn: every 2 weeks
- Winter: every 3 weeks

Waste and Recycling

- Every 2 weeks, all year

FOR MORE INFORMATION

Town of Gaspé, Public Works

418 368-2104, ext. 8509

l.aspirault@ritmrg.com

ville.gaspe.qc.ca
(section Management of Residual Materials)